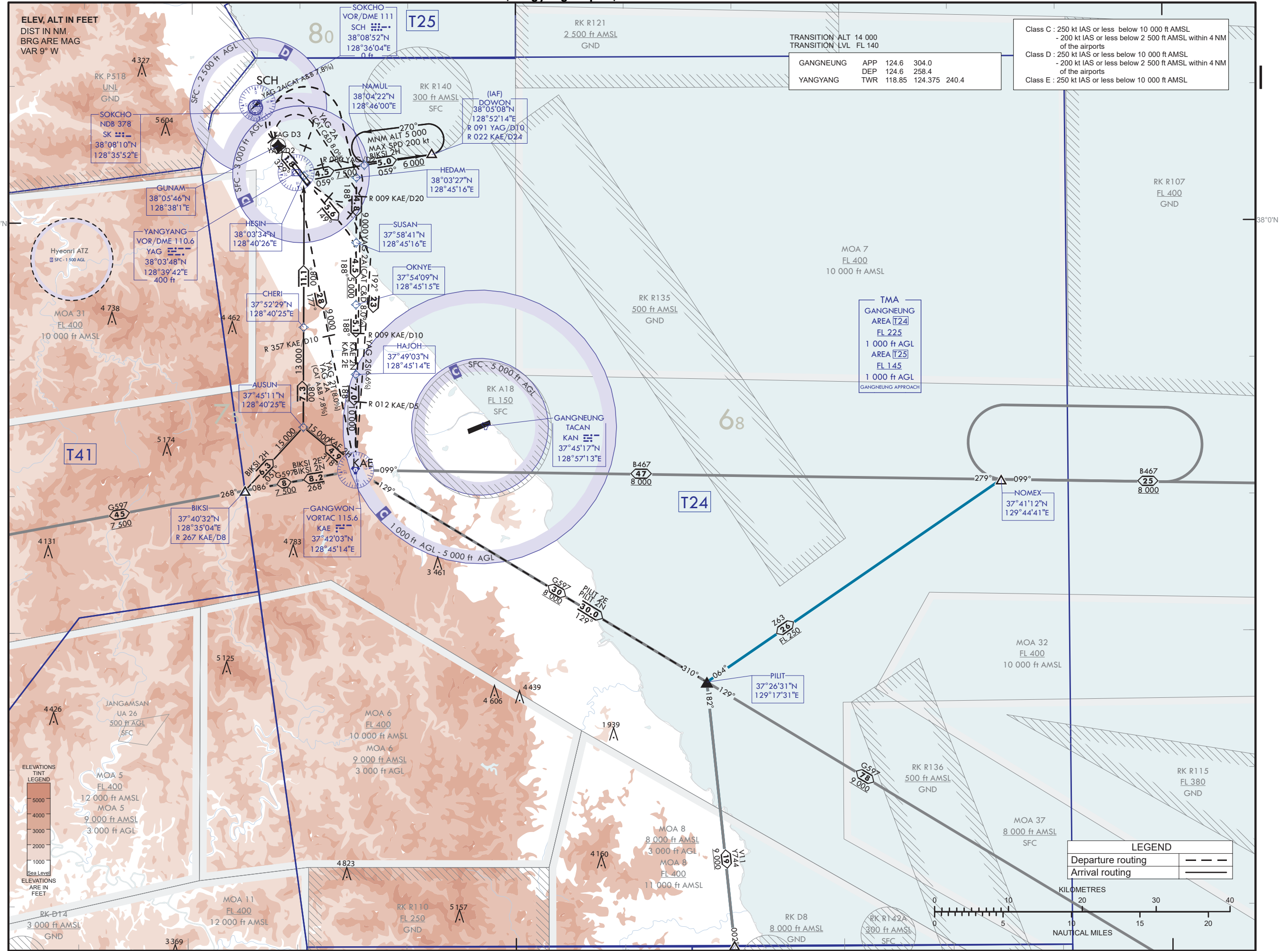


AREA CHART - ICAO(DEPARTURE AND TRANSIT)

TMA GANGNEUNG(Yangyang Airport)



Class C : 250 kt IAS or less below 10 000 ft AMSL - 200 kt IAS or less below 2 500 ft AMSL within 4 NM of the airports
Class D : 250 kt IAS or less below 10 000 ft AMSL - 200 kt IAS or less below 2 500 ft AMSL within 4 NM of the airports
Class E : 250 kt IAS or less below 10 000 ft AMSL

GANGNEUNG	APP	124.6	304.0
YANGYANG	DEP	124.6	258.4
	TWR	118.85	124.375 240.4

TMA GANGNEUNG AREA T24 FL 225 1 000 ft AGL AREA T25 FL 145 1 000 ft AGL GANGNEUNG APPROACH
--

LEGEND	
Departure routing	---
Arrival routing	—

ELEVATIONS TMT LEGEND	
5000	MOA 5 FL 400
4000	12 000 ft AMSL
3000	MOA 5 9 000 ft AMSL
2000	3 000 ft AGL
1000	
Sea Level	
ELEVATIONS ARE IN FEET	

Date of aeronautical information 6 AUG 2015

PUBLISHED BY THE OFFICE OF CIVIL AVIATION, MINISTRY OF LAND, INFRASTRUCTURE AND TRANSPORT, REPUBLIC OF KOREA

Change : Withdrawal of YANGYANG TWR frequency and Information of GANGNEUNG DEP frequency.

OFFICE OF CIVIL AVIATION

AIRAC AIP AMDT 11/20  
Effective : 1600UTC 2 DEC 2020